

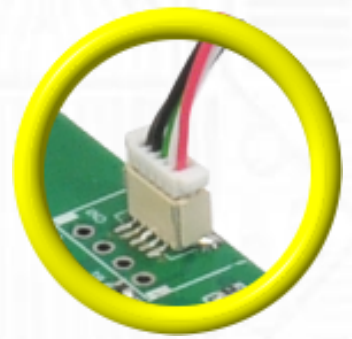
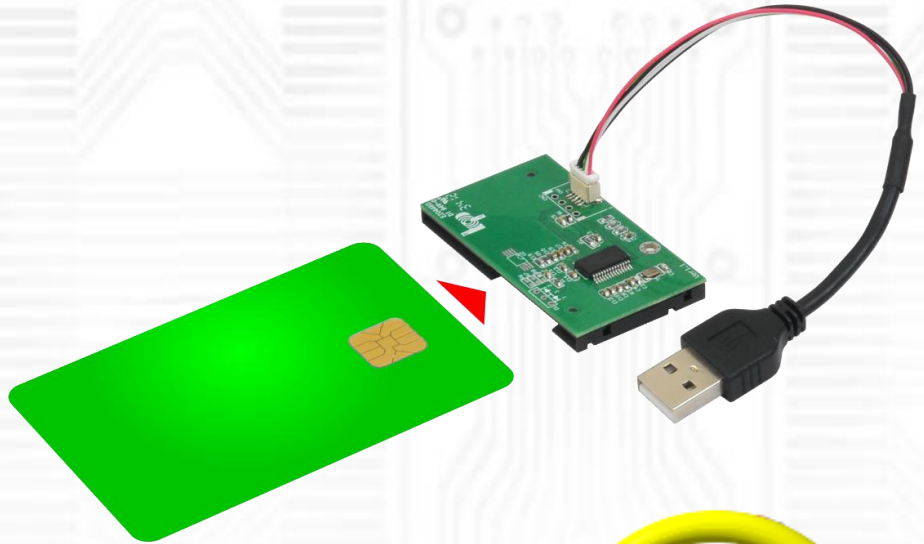
USB9540 (Smart Card Reader module)

The USB9540 smart card readers module are designed for securing network access, The reader is suitable for Embedded system with USB customize connector

USB9540 can be generally applied to Smart Card read/write terminal device, such as ATM, POS terminal, Public telephone, E-Commerce, personal consumption on Internet, personal certification, prepaid system, loyalty system...etc.

Specification:

- Support EMV Level 1 specification
- Support USB 2.0 full speed
- Based on ISO7816 implementation
- Support PC Smart Card industry standard – PC/SC 2.0
- Support Microsoft Smart Card for Windows
- Meet Microsoft WHQL USB Smart Card Reader requirements
- Meet US Federal Information Processing Standards (FIPS) Publication 201 requirements on smart card reader interoperability
- Support T0, T1 protocol
- Support I2C memory card, SLE4418, SLE4428, SLE4432, SLE4442, SLE4436, SLE5536, SLE6636, AT88SC1608, AT45D041 card and AT45DB041 card via external EEPROM
- Support ISO7816 Class A, B and C (5V/3V/1.8V) card
- Implemented as an USB full speed device with bulk transfer endpoint, Mass Storage endpoint
- Built-in PLL for USB and Smart Card clocks requirement
- Support EEPROM for USB descriptors customization (PID/VID/ iManufacturer/ iProduct/Serial Number), Direct Web Page Link, and accessing memory card module.
- EEPROM programmable via USB interface
- Support software update for memory card module
- Support Direct Web Page Link via configuration in external EEPROM
- Support short APDU and extended APDU
- Compatible with Microsoft USB-CCID driver
- Support remote wake up through inserting card/removing card
- Support USB selective suspend
- Support Power Saving Mode (Using one pin to select between Normal/PWR Saving Mode)
- Add ACCESS led



USB9540 Package Contents



USB9540
(Smart Card Reader module) x1

As a New manufacturer of quality computer connectivity products since 2009/Mar, BPLUS technology brings to market a broad range of upgrade products. These products bridge the connection between Desktop/Notebook systems and external peripherals.



Professional I/O adapter provider

Bplus Technology Co., Ltd.

Address: 9F-1, NO. 88, ZHOU-TZYY ST.,
NEI-HU, TAIPEI, TAIWAN, R.O.C
TEL: +886-2-7736-0128
FAX: +886-2-7736-0126
Email: sales@bplus.com.tw
http://www.Bplus.com.tw